

**advanced**  
SAFETY

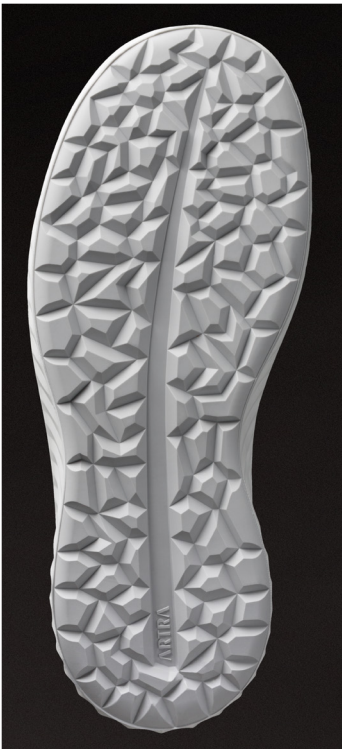
**ARELAX™**  
SHOE CONSTRUCTION  
ART OF RELAXED FEET



## ARICA 6207 1010 S2

safety half shoes

- upper** hydrophobic microfiber MICRO PRO 2,2 mm increases resistance and breathability
- lining** SILVER X with integrated silver ions protection for antibacterial properties
- insole** EFFECTOR memory polyurethane foam for added air rebound and breathability
- toe cap** steel, wide anatomical shape provides more toe room and optimum fit
- sole** RAPTOR PU.2D with responsive cushioning for high energy return
- size** 35 - 48
- standard** EN ISO 20345:2011 S2 SRC



**ARTRA SAFETY**